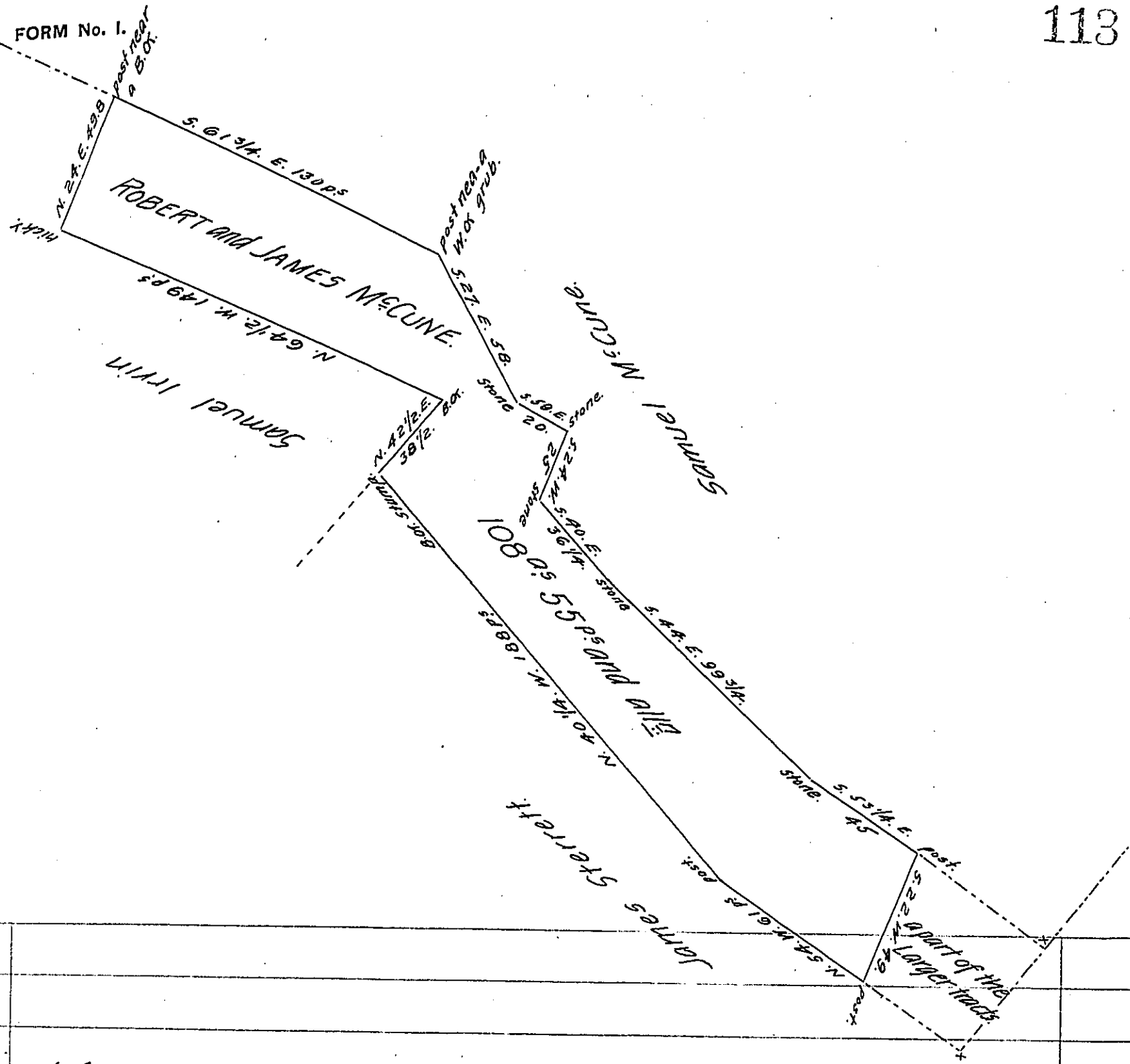


FORM No. 1.



A Draught of a tract of Land situate in Hopewell Township, Cumberland County, Containing 108^{ac} 55^{ps} and the Usual Allowance of six $\frac{1}{2}$ cent for roads &c. It being part of a Larger tract of 327^{ac} 151^{ps} and the allowance, formerly Surveyed to Robert McCune and James McCune, in pursuance of a warrant dated the 13th Day of May 1763. Surveyed and Divided off the 3^d day of March 1807.

W^m Wheeler, D. S.

To Sam^l Cochran, Esq^r. S. O.

IN TESTIMONY that the above is a copy of the original remaining on file in the Department of Internal Affairs of Pennsylvania, made conformably to an Act of Assembly approved the 16th day of February, 1833, I have hereunto set my Hand and caused the Seal of said Department to be affixed at Harrisburg, this twenty-sixth day of December 1905.

Quac R. Brown
Secretary of Internal Affairs.